



AIRCAREVG
ULTRA LUXURY ANTI-MICROBIAL EMULSION

NIPPON PAINT AIRCARE VG

Nippon Paint AirCare VG Matt is an anti-formaldehyde interior emulsion that helps to create safer and more hygienic indoor environment. This breakthrough product contains Unique Absorption Technology - (UAT) that continually absorbs harmful free formaldehyde from the air and is embedded in Polymer backbone, resulting in clean fresh air. It is enriched with Silver Ion Technology which gives superior Anti Bacterial performance and is effective against Virus*. It is ideal for people who are allergic to formaldehyde and paint odour.

GREEN ASSURED



PRODUCT FEATURES



Unique Absorption Technology

Absorbs Harmful Formaldehyde from the air and is embedded in Polymer Backbone



Silver Ion Technology

It does not allow Fungi, bacteria & Virus* to breed and form colonies on the wall



Ultra Low VOC

Healthy interiors ensures that home owners can occupy the house immediately after painting

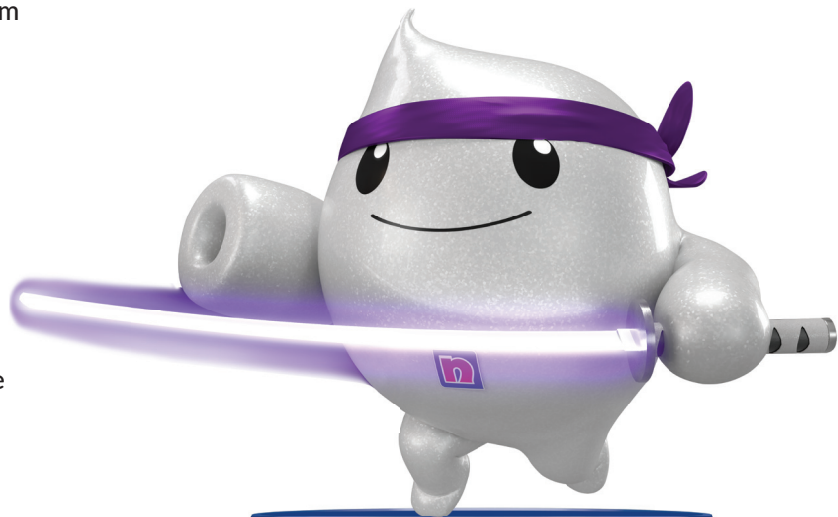


Low Odour

It does not emit any odour during & after painting hence reducing the risk of any irritation, headache or nausea



Superior Washability and Scrub Resistance Walls can be easily maintained and kept free of stains for long.





**NIPPON
PAINT**

AIRCARE VG
ULTRA LUXURY ANTI-MICROBIAL EMULSION

TECHNICAL DETAILS

Bases	:	White & Bases
Colour Range	:	Please refer to Nippon Paint shade card and fan decks
Finish	:	Smooth Matt
Dry Time	:	To Touch: 30 minutes To Recoat: 4-6 Hours
Gloss level	:	60° Head: 1-10 units
Clean up solvent	:	Clean, potable water
Stability of diluted paint	:	24 Hours
Shelf life	:	3 Years from the date of manufacture in original tightly closed containers
Dilution	:	30 - 40% by volume with clean potable water. Stir & strain well before use. Upto 20% by volume with clean potable water for dark shades.

Coverage:



AIRCARE VG

200-220 sq.ft/litre/coat
& 100-110 sq.ft/litre/2 coats

(Actual coverage is dependant on the substrate condition, surface porosity, method of application).

HOW TO APPLY

Surface Preparation:

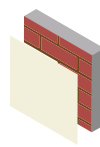


Keep surface clean & dry. Remove dust, dirt, grease and any flaking paint from the surface and sand to smooth. Ensure there is no fungus or moisture on the wall. Repair surface defects with suitable filler.

Application:

- Brush
- Rolle
- Conventional Spray:

Process:



Primer

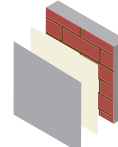
Nippon Paint
DR. Bond
Efflorescence
Resistant sealer /
Multi Purpose
Wall Sealer



Apply 1 coat



Allow it to dry
for 4-6 hours

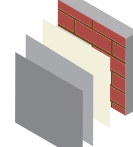


Putty

Nippon Paint
Acrylic Wall Putty

Apply 1-2 coats

Allow it to dry
for 12-18 hours

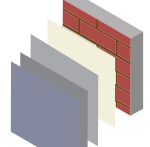


Primer

Nippon Paint
DR. Bond
Efflorescence
Resistant sealer /
Multi Purpose
Wall Sealer

Apply 1 coat

Allow it to dry
for 6-8 hours



Top Coat

Nippon Paint
Aircare VG Matt

Apply 2-3 coats

Allow it to dry
for 4-6 hours

SAFETY AND ENVIRONMENT

During Painting:

Always work in a well ventilated area. Wear appropriate attire, especially gloves and eye protection gear. Avoid contact with skin as it may cause irritation.

Cleaning:

Clean all equipments with clean water immediately after use.

Safety Instructions:

In the case of eye contact, rinse immediately with water and seek immediate medical treatment. To remove paint from skin, use soap and water or appropriate cleanser. In the event of spillage, contain and collect spilt paint by using sand or earth.

Precautions:

Avoid painting when the temperature is below 10 degrees Celsius. Painting is not recommended if the moisture content and alkalinity of the walls is high. Moisture content of the walls should be below 16% (measured by Protimeter) and alkalinity of the wall should be below pH-9. Relative humidity should be below 85%. Painting on a newly plastered wall is recommended after 12 weeks of curing.

Note: Dark shade may require additional coat for hiding.

Post Application Instruction: For removing stains, use Soft Cotton cloth or Sponge with mild soap solution and wipe clean. Please allow atleast 1 week of drying time to freshly painted wall for it to be ready for stain removal/cleaning. Stains are best removed when fresh or within 24 hours.

Storage:

Store paint in a cool, dry and well ventilated place away from heat sources, flammables or direct sunlight. Keep container tightly closed in a secure, upright position. Do not store near food, drink or animal feed. Keep out of reach of children. Do not dispose of unwanted paint into drains, water sources or open sewers. To dispose safely, pour unwanted paint onto old newspapers and let dry before placing in a proper waste receptacle.

Disposal Information:

Disposal of any paint waste & containers in accordance with applicable Environment (Protection) Act 1986 under the Hazardous Wastes (Management & Handling) rules 1989.

Environment:

Does not contain any added lead, mercury or chromium compounds.

Lead content does not exceed 90 parts per million.

