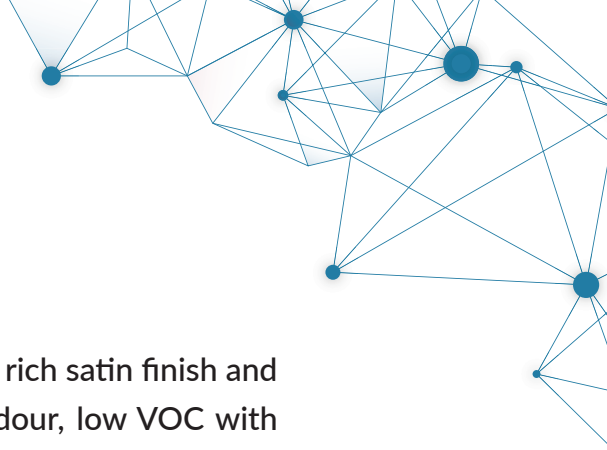




# NIPPON PAINT

**AQUA  
BODELAC**  
Water based enamel  
Semi-gloss



## NIPPON PAINT AQUA BODELAC

Nippon Aqua Bodelac Water based enamel Semi gloss provide rich satin finish and can be used for Walls & masanory surfaces. It is safe, low odour, low VOC with excellent washability and durability.

## GREEN ASSURED



## PRODUCT FEATURES



**Rich Satin Finish**



**Excellent fungal Resistance**



**Low Odour**



**Fast Drying**



**Low VOC**





# NIPPON PAINT

## AQUA BODELAC

Water based enamel  
Semi-gloss

## TECHNICAL DETAILS

Finish	:	Smooth & Semi Glossy	
Dry Time	:	To Touch: 30 minutes	To Recoat: 4-6 HOURS
Gloss level	:	60° head: 40 to 50 Units	
Clean up solvent	:	Clean, potable water	
Stability of diluted paint	:	24 Hours	
Shelf life	:	3 Years from the date of manufacture in original tightly closed containers .Higher temperature during storage may reduce the shelf life and may lead to gelling in the container.	
Dilution	:	10-20% by volume with clean, potable water. Stir well before use.	

## Coverage:



### AQUA BODELAC

100 - 120 sq.ft./litre/2coats

(Actual coverage is dependant on the substrate condition)

## HOW TO APPLY

### Surface Preparation:

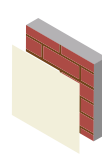


**SURFACE PREPERATION FOR CONCRETE:** Keep surface clean & dry.Remove dust, dirt & grease and any flaking paint from the surface and sand to smooth( for interior surface). Ensure there is no fungus or moisture on the walls.

### Application:

Brush: Dilute both 1st and 2nd coats with 10-20% water  
Conventional Spray: Dilute both 1st and 2nd coats with 10-20% water

### Process:



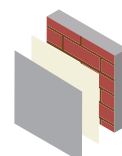
**Primer**  
Nippon Paint  
Multi-Purpose  
Wall Sealer/  
Interior Primer



Apply 1 coats



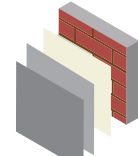
Allow it to dry  
for 6-8 hours



**Putty**  
Nippon Paint  
Acrylic Wall Putty

Apply 1-2 coats

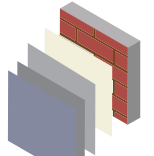
Allow it to dry  
for 12-18 hours



**Primer**  
Nippon Paint  
Aqua Bodelac  
Semi Glossy Enamel  
(100% dilution with  
potable water  
by volume)

Apply 1 coats

Allow it to dry  
for 4-6 hours



**Top Coat**  
Nippon Paint  
Aqua Bodelac  
Semi Glossy  
Enamel

Apply 2-3 coats

Allow it to dry  
for 4-6 hours

## SAFETY AND ENVIRONMENT

### During Painting:

Always work in a well ventilated area. Wear appropriate attire, especially gloves and eye protection gear. Avoid contact with skin as it may cause irritation.

### Cleaning:

Clean all equipments with clean water immediately after use.

### Safety Instructions:

In the case of eye contact, rinse immediately with water and seek immediate medical treatment. To remove paint from skin, use soap and water or appropriate cleanser. In the event of spillage, contain and collect spilt paint by using sand or earth.

### Precautions:

Avoid painting when the temperature is below 10 degrees Celsius. Painting is not recommended if the moisture content and alkalinity of the walls is high. Moisture content of the walls should be below 16% (measured by Protimeter) and alkalinity of the wall should be below pH-9. Relative humidity should be below 85%. Painting on a newly plastered wall is recommended after 12 weeks of curing.

### Storage:

Store paint in a cool, dry and well ventilated place away from heat sources, flammables or direct sunlight. Keep container tightly closed in a secure, upright position. Do not store near food, drink or animal feed. Keep out of reach of children. Do not dispose of unwanted paint into drains, water sources or open sewers. To dispose safely, pour unwanted paint onto old newspapers and let dry before placing in a proper waste receptacle.

### Disposal Information:

Disposal of any paint waste & containers in accordance with applicable Environment (Protection) Act 1986 under the Hazardous Wastes (Management & Handling) rules 1989.

### Environment:

Does not contain any added lead, mercury or chromium compounds.

**Lead content does not exceed 90 parts per million.**

Note: For dark shades and horizontal surfaces 1 or 2 additional coats may be required for better performance of paint film.

