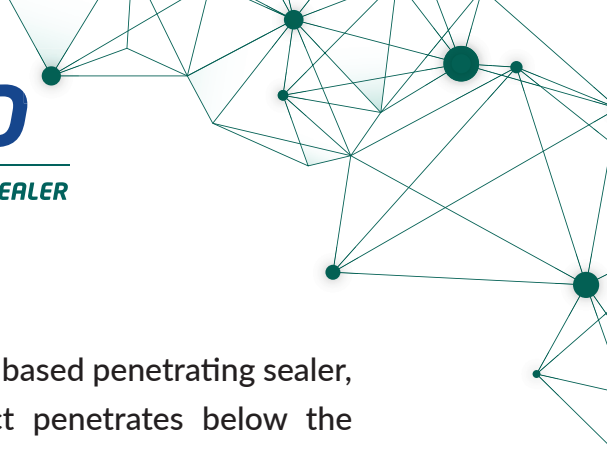




**NIPPON  
PAINT**

**DR.BOND**

EFFLORESCENCE RESISTANT SEALER



Nippon Paint Dr.Bond Efflorescence Resistant sealer is a water-based penetrating sealer, for concrete masonry and lime based surface. The product penetrates below the substrate's surface and block free lime coming on to the surface. It acts as an anchor between the surface and the top coat. It also enhances alkali resistant and efflorescence resistant property thereby protect the structure for longer period.

## GREEN ASSURED



## PRODUCT FEATURES



**Low VOC**  
Environment friendly and  
Healthy paint



**Efflorescence Resistant**  
It will protect topcoat from  
fading and white patches.





# NIPPON PAINT

# DR.BOND

EFFLORESCENCE RESISTANT SEALER

## TECHNICAL DETAILS

Bases	:	White	
Finish	:	Soft Sheen	
Dry Time	:	To Touch: 30 minutes	To Recoat: 4-6 hours
Clean up solvent	:	Clean, potable water	
Stability of diluted paint	:	24 Hours	
Shelf life:		3 Years from the date of manufacture in original tightly closed containers.	
Dilution	:	100% by volume with clean, potable water for exterior.	

## Coverage:



### DR. BOND

100-130 sq.ft/litre/coat

Actual coverage is dependant on the substrate condition, surface porosity, method of application.

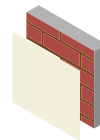
## HOW TO APPLY

### Surface Preparation:

**For Repainting:** Clean the surface till it is free from dust, grease and flaking paint from surface. Any unstable paint to be removed, using high pressure wash or scraper whichever is appropriate. Algae and fungus on the wall to be removed, by using high pressure wash or coir brush and shall be treated with Walltron Kleanwall fungicidal solution.

**New plaster/Fresh Concrete:** Ensure surface is completely cured and dry. Application of cement paint/lime/Cement putty as undercoat is not recommended. Fill the cracks upto 3mm if any with Walltron N-Seal Crack Fill Powder.

### Process:



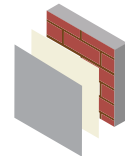
**Primer**  
Nippon Paint  
Dr.Bond Efflorescence  
Resistant sealer



Apply 1 coats



Allow it to dry  
for 4-5 hours



**Top Coat**  
Nippon Paint  
Exterior Emulsion  
Topcoats

Apply 2-3 coats

Allow it to dry  
for 4-6 hours

### Application:

Brush:	Dilute with water 100% for Exterior use
Roller:	Dilute with water 100% for Exterior Use
Conventional Spray:	Dilute with water 40% - 50% for Exterior use

## SAFETY AND ENVIRONMENT

### During Painting:

Always work in a well ventilated area. Wear appropriate attire, especially gloves and eye protection gear. Avoid contact with skin as it may cause irritation.

### Cleaning:

Wash all the tools with water immediately after application.

### Safety Instructions:

In the case of eye contact, rinse immediately with water and seek immediate medical treatment. To remove paint from skin, use soap and water or appropriate cleanser. In the event of spillage, contain and collect spilt paint by using sand or earth.

### Precautions:

Avoid painting when the temperature is below 10°C. Painting is not recommended if the moisture content and alkalinity of the walls is high. Moisture content of the walls should be below 16% (measured by Protimeter) and alkalinity of the wall should be below pH-9. Relative humidity should be below 85%. Painting on a newly plastered wall is recommended after 12 weeks of curing.

**Note:** Do not Keep unpainted for more than 15 days.

For highly affected areas by Efflorescence two coats of Dr. Bond Efflorescence Resistant sealer are recommended followed by topcoats.

**Post Application Instruction:** To enhance the performance of the paint film, clean the exterior surface, algae and fungus if any with clean water in an interval of 6 months.

### Storage:

Store paint in a cool, dry and well ventilated place away from heat sources, flammables or direct sunlight. Keep container tightly closed in a secure, upright position. Do not store near food, drink or animal feed. Keep out of reach of children. Do not dispose of unwanted paint into drains, water sources or open sewers. To dispose safely, pour unwanted paint onto old newspapers and let dry before placing in a proper waste receptacle

### Disposal Information:

Disposal of any paint waste & containers in accordance with applicable Environment (Protection) Act 1986 under the Hazardous Wastes (Management & Handling) rules 1989.

### Environment:

Does not contain any added lead, mercury or chromium compounds.

**Lead content does not exceed 90 parts per million.**

