



NIPPON PAINT

EXTERIOR PRIMER

Nippon Exterior Wall Primer is a water based and is specially formulated for exterior cement, concrete and plastered surfaces. It's unique formula provides extra protection to the top coat. It is algal and fungus resistant as well.

GREEN ASSURED



PRODUCT FEATURES



Low VOC
Environment friendly and
Healthy paint



Where To use: Can be used on Exterior masonry surfaces, ceilings and hard & soft boards.



NIPPON PAINT

EXTERIOR PRIMER

TECHNICAL DETAILS

| | | | |
|----------------------------|---|---|----------------------|
| Bases | : | White | |
| Finish | : | Matt | |
| Dry Time | : | To Touch: 30 minutes | To Recoat: 4-6 hours |
| Clean up solvent | : | Clean, potable water | |
| Stability of diluted paint | : | 24 Hours | |
| Shelf life: | | 3 Years from the date of manufacture in original tightly closed containers. | |
| Dilution | : | 100% by volume with clean, potable water for exterior. | |

Coverage:



EXTERIOR PRIMER

9.29 - 10.22 sq.mt./litre/1 coat

(Actual coverage is dependant on the substrate condition, surface porosity, method of application.)

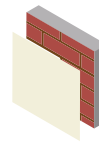
HOW TO APPLY

Surface Preparation:

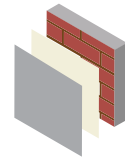
For Repainting: Clean the surface till it is free from dust, grease and flaking paint from surface. Any unstable paint to be removed, using high pressure wash or scraper whichever is appropriate. Algae and fungus on the wall to be removed, by using high pressure wash or coir brush, it must be treated with Walltron Kleanwall fungicidal solution.

New plaster/Fresh Concrete: Ensure surface is completely cured and dry. Application of cement paint/lime/Cement putty as undercoat is not recommended. Fill the cracks upto 3mm if any with Walltron N-seal crack fill powder.

Process:



Primer
Nippon Paint
Exterior Primer



Top Coat
Nippon Paint
Exterior Topcoats

Apply 1 coat

Allow it to dry for 4-5 hours

Apply 2-3 coats

Allow it to dry for 4-6 hours

Application:

| | |
|---------|---|
| Brush: | Dilute with water 100% for Exterior use |
| Roller: | Dilute with water 100% for Exterior Use |

SAFETY AND ENVIRONMENT

During Painting:

Always work in a well ventilated area. Wear appropriate attire, especially gloves and eye protection gear. Avoid contact with skin as it may cause irritation.

Cleaning:

Wash all the tools with water immediately after application.

Safety Instructions:

In the case of eye contact, rinse immediately with water and seek immediate medical treatment. To remove paint from skin, use soap and water or appropriate cleanser. In the event of spillage, contain and collect spilt paint by using sand or earth.

Precautions:

Avoid painting when the temperature is below 10 degrees Celsius. Painting is not recommended if the moisture content and alkalinity of the walls is high. Moisture content of the walls should be below 16% (measured by Protimeter) and alkalinity of the wall should be below pH-9. Relative humidity should be below 85%. Painting on a newly plastered wall is recommended after 12 weeks of curing.

Storage:

Store paint in a cool, dry and well ventilated place away from heat sources, flammables or direct sunlight. Keep container tightly closed in a secure, upright position. Do not store near food, drink or animal feed. Keep out of reach of children. Do not dispose of unwanted paint into drains, water sources or open sewers. To dispose safely, pour unwanted paint onto old newspapers and let dry before placing in a proper waste receptacle.

Disposal Information:

Disposal of any paint waste & containers in accordance with applicable Environment (Protection) Act 1986 under the Hazardous Wastes (Management & Handling) rules 1989.

Environment:

Does not contain any added lead, mercury or chromium compounds.
Lead content does not exceed 90 parts per million.

Note: Do not Keep unpainted for more than 15 days

