



# NIPPON PAINT

## MATEX EZ WASH

WASHABLE INTERIOR EMULSION



### NIPPON PAINT MATEX EZ WASH

Help your wall fight back stains by applying Nippon Paint Matex EZ Wash Washable Interior Emulsion. With excellent value for money, Matex EZ Wash is washable, has high durability and imparts a silky, smooth finish. This modified acrylic emulsion has superior cleaning properties that give you spotless interiors. It resists fungal growth and emits a fresh fragrance.

### GREEN ASSURED



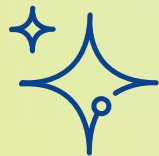
## PRODUCT FEATURES



**Fragrance**  
Keeps interiors smelling fresh.



**Washability**  
Makes the surface easy to clean.



**Pearl Sheen**  
It reflects light even in low intensity lighting. Gives a rich, luxurious look and feel to the walls.



**Low VOC**  
It does not emit any odour during and after painting, hence reducing the risk of irritation, headache or nausea, leaving your interiors healthy.



**Stain-resistant**  
Does not allow stains to settle on the wall.





**NIPPON  
PAINT**

**MATEX EZ WASH**  
WASHABLE INTERIOR EMULSION

## TECHNICAL DETAILS

Bases	: White, Base 4, Base 3, Base 2, Base 1 & Yellow Base
Colour Range	: Please refer the Nippon Paint shade card and fan deck
Finish	: Pearl Sheen
Coverage	: 220-240 sq ft/litre/coat & 120-130 sq ft/litre/2 coats (Actual coverage is dependent on the substrate condition, surface porosity, method of application)
Dry Time	: To touch - 30 minutes, To recoat - 4 to 6 hours
Gloss Level	: 60° head - 15 to 25 units
Clean Up Solvent	: Clean, potable water
Stability of Diluted Paint	: 24 hours
Shelf Life	: 3 years from the date of manufacture in original, tightly closed containers
Dilution	: Upto 40% by volume with clean, potable water. Stir well before use. 20-30% by volume with potable water for dark shades

## Coverage:



### Matex EZ Wash

20.44 - 22.30 sq.mt./litre/coat  
11.15 - 12.08 sq.mt./litre/2 coats

(Actual coverage is dependent on the substrate condition, surface porosity, method of application)

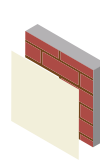
## HOW TO APPLY

### Surface Preparation:



Keep surface clean & dry. Remove dust, dirt, grease and any flaking paint from the surface and sand to smooth. Ensure there is no fungus or moisture on the wall.

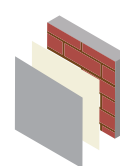
### Process:



**Primer**  
Multi Purpose  
Wall Sealer/  
Interior Primer

Apply 1 coat  
and allow to dry

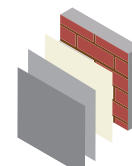
Allow it to dry  
for 6-8 hours



**Putty**  
Acrylic Wall Putty

Apply 1-2 coats  
for smoothening  
of surface

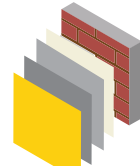
Allow it to dry  
overnight



**Primer**  
Multi Purpose  
Wall Sealer/  
Interior Primer

Apply 1 coat  
and allow to dry

Allow it to dry  
for 6-8 hours



**Top Coat**  
Matex EZ Wash  
Washable Interior  
Emulsion

Apply 2-3 coats  
in an interval

Allow it to dry  
for 4-6 hours

### Application:

Brush:	Dilute both 1 <sup>st</sup> and 2 <sup>nd</sup> coats with 30-40% water
Roller:	Dilute both 1 <sup>st</sup> and 2 <sup>nd</sup> coats with 30-40% water
Conventional Spray:	Dilute both 1 <sup>st</sup> and 2 <sup>nd</sup> coats with 30% water

## SAFETY AND ENVIRONMENT

### During Painting:

Always work in a well ventilated area. Wear appropriate attire, especially gloves and eye protection gear. Avoid contact with skin as it may cause irritation.

### Cleaning:

Clean all equipment with clean water immediately after use.

### Safety Instructions:

In the case of eye contact, rinse immediately with water and seek immediate medical treatment. To remove paint from skin, use soap and water or appropriate cleanser. In the event of spillage, contain and collect spilt paint by using sand or earth.

### Precautions:

Avoid painting when the temperature is below 10°C. Painting is not recommended if the moisture content and alkalinity of the walls is high. Moisture content of the walls should be below 16% (measured by Protimeter) and alkalinity of the wall should be below pH-9. Relative humidity should be below 85%. Painting on a newly plastered wall is recommended after 12 weeks of curing.

Note: For dark shades and horizontal surfaces 1 or 2 additional coats may be required for better performance of paint film. For removing stains, use Soft Cotton cloth or Sponge with mild soap solution and wipe clean. Please allow atleast 1 week of drying time to freshly painted wall for it to be ready for stain removal/cleaning. Stains are best removed when fresh or within 24 hours

### Storage:

Store paint in a cool, dry and well ventilated place away from heat sources, flammables or direct sunlight. Keep container tightly closed in a secure, upright position. Do not store near food, drink or animal feed. Keep out of reach of children. Do not dispose of unwanted paint into drains, water sources or open sewers. To dispose safely, pour unwanted paint onto old newspapers and let it dry before placing in a proper waste receptacle.

### Disposal Information:

Disposal of any paint waste & containers should be done in accordance with applicable Environment (Protection) Act 1986 under the Hazardous Wastes (Management & Handling) Rules 1989.

### Environment:

Does not contain any added lead, mercury or chromium compounds. Lead content does not exceed 90 parts per million.

