



NIPPON PAINT

MATEX GOLD

Premium Acrylic Emulsion

NIPPON PAINT MATEX GOLD

Nippon Paint Matex Gold is a premium emulsion which provides a smooth sheen finish to interior walls. It delivers excellent coverage, possess good washability and is low VOC, hence maintaining a healthy home.

GREEN ASSURED

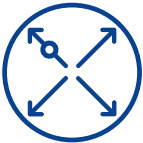


PRODUCT FEATURES



Smooth Sheen Finish

Gives the walls a smooth even finish by hiding unevenness



Excellent Coverage

cost of paint is Low



Good Washability

Trouble free cleaning of the walls



Low VOC

Environment- Friendly



Where To use: Can be used on interior walls, ceilings and hard & soft boards.



NIPPON PAINT

MATEX GOLD

Premium Acrylic Emulsion

TECHNICAL DETAILS

Bases	:	White & MG4, MG3, MG2, MG1, Red Base, Yellow Base
Colour Range	:	Please refer to Nippon Paint shade card and fan decks
Finish	:	Smooth Sheen
Dry Time	:	To Touch: 30 minutes To Recoat: 4-6 Hours
Gloss level	:	60° head: 0 to 10 units.
Clean up solvent	:	Clean, potable water
Stability of diluted paint	:	24 Hours
Shelf life	:	3 Years from the date of manufacture in original tightly closed containers.
Dilution	:	50-60% by volume with clean, potable water. Stir well before use. 20-30% by volume with potable water for dark shades.

Coverage:



MATEX GOLD

24.15 - 27.87 sq.mt./litre/coat &
12.08 - 13.94 sq.mt./litre/2 coats

(Actual coverage is dependant on the substrate condition, Film Thickness, surface porosity, method of application)

HOW TO APPLY

Surface Preparation:

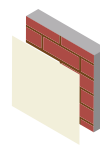


Keep surface clean & dry. Remove dust, dirt, grease and any flaking paint from the surface and sand to smooth. Ensure there is no fungus or moisture on the wall.

Application:

Brush:	Dilute both 1 st and 2 nd coats with 50-60% water
Roller:	Dilute both 1 st and 2 nd coats with 50-60% water
Conventional Spray:	Dilute both 1 st and 2 nd coats with 30% water

Process:



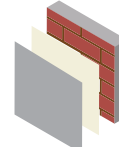
Primer
Nippon Paint
Multi-Purpose
Wall Sealer/
Interior Primer



Apply 1 coat



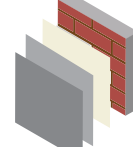
Allow it to dry
for 6-8 hours



Putty
Nippon Paint
Acrylic Wall Putty

Apply 1-2 coats

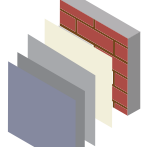
Allow it to dry
for 12-18 hours



Primer
Nippon Paint
Multi-Purpose
Wall Sealer/
Interior Primer

Apply 1 coat

Allow it to dry
for 6-8 hours



Top Coat
Nippon Paint
Matex Gold

Apply 2-3 coats

Allow it to dry
for 4-6 hours

SAFETY AND ENVIRONMENT

During Painting:

Always work in a well ventilated area. Wear appropriate attire, especially gloves and eye protection gear. Avoid contact with skin as it may cause irritation.

Cleaning:

Clean all equipments with clean water immediately after use.

Safety Instructions:

In the case of eye contact, rinse immediately with water and seek immediate medical treatment. To remove paint from skin, use soap and water or appropriate cleanser. In the event of spillage, contain and collect spilt paint by using sand or earth.

Precautions:

Avoid painting when the temperature is below 10 degrees Celsius. Painting is not recommended if the moisture content and alkalinity of the walls is high. Moisture content of the walls should be below 16% (measured by Protimeter) and alkalinity of the wall should be below pH-9. Relative humidity should be below 85%. Painting on a newly plastered wall is recommended after 12 weeks of curing.

Storage:

Store paint in a cool, dry and well ventilated place away from heat sources, flammables or direct sunlight. Keep container tightly closed in a secure, upright position. Do not store near food, drink or animal feed. Keep out of reach of children. Do not dispose of unwanted paint into drains, water sources or open sewers. To dispose safely, pour unwanted paint onto old newspapers and let dry before placing in a proper waste receptacle.

Disposal Information:

Disposal of any paint waste & containers in accordance with applicable Environment (Protection) Act 1986 under the Hazardous Wastes (Management & Handling) rules 1989.

Environment:

Does not contain any added lead, mercury or chromium compounds.

Lead content does not exceed 90 parts per million.

Post Application Instruction: For removing stains, use Soft Cotton cloth or Sponge with mild soap solution and wipe clean.

Please allow atleast 1 week of drying time to freshly painted wall for it to be ready for stain removal/cleaning. Stains are best removed when fresh or within 24 hours.

