





# NIPPON PAINT

# SAMURAI

SUPER ACRYLIC EXTERIOR EMULSION

## TECHNICAL DETAILS

Bases	:	White and Bases
Colour Range	:	Please refer to Nippon Paint shade card and fan decks
Finish	:	Smooth Matt Finish
Dry Time	:	To Touch: 30 minutes      To Recoat: 4-6 Hours
Gloss level	:	60° head: 0 to 5 units
Clean up solvent	:	Clean, potable water
Stability of diluted paint	:	24 Hours
Shelf life	:	3 Years from the date of manufacture in original tightly closed containers
Dilution	:	50-60% by volume with clean, potable water

## Coverage:



### SAMURAI

4.65-5.57 sq.mt./litre/2 coats

(Actual coverage is dependent on the substrate condition)

## HOW TO APPLY

### Surface Preparation:

**For Repainting:** Clean the surface till it is free from dust, grease and any flaking paint. Any unstable paint to be removed, using high pressure wash or scraper whichever is appropriate. Algae or Fungus on the wall to be removed, by using high pressure wash or coir brush and shall be treated with Nippon Walltron Kleanwall Fungicidal Solution

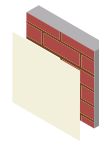
**New Plaster:** Ensure that surface is completely cured and dry. Application of cement paint/white cement/lime as an undercoat is not recommended.



### Application:

Brush:	Dilute both 1 <sup>st</sup> and 2 <sup>nd</sup> coats with 50-60% water
Roller:	Dilute both 1 <sup>st</sup> and 2 <sup>nd</sup> coats with 50-60% water
Conventional Spray:	Dilute both 1 <sup>st</sup> and 2 <sup>nd</sup> coats with 30% water

### Process:



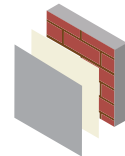
**Primer**  
Nippon Paint  
Multi purpose wall Sealer/  
Exterior Primer



Apply 1 coats



Allow it to dry  
for 4-6 hours



**Top Coat**  
Nippon Paint  
Samurai

Apply 2-3 coats

Allow it to dry  
for 4-6 hours

## SAFETY AND ENVIRONMENT

### During Painting:

Always work in a well ventilated area. Wear appropriate attire, especially gloves and eye protection gear. Avoid contact with skin as it may cause irritation.

### Cleaning:

Clean all equipments with clean water immediately after use.

### Safety Instructions:

In the case of eye contact, rinse immediately with water and seek immediate medical treatment. To remove paint from skin, use soap and water or appropriate cleanser. In the event of spillage, contain and collect spilt paint by using sand or earth.

### Precautions:

Avoid painting when the temperature is below 10°C. Painting is not recommended if the moisture content and alkalinity of the walls is high. Moisture content of the walls should be below 16% (measured by Protimeter) and alkalinity of the wall should be below pH-9. Relative humidity should be below 85%. Painting on a newly plastered wall is recommended after 12 weeks of curing.

### Storage:

Store paint in a cool, dry and well ventilated place away from heat sources, flammables or direct sunlight. Keep container tightly closed in a secure, upright position. Do not store near food, drink or animal feed. Keep out of reach of children. Do not dispose of unwanted paint into drains, water sources or open sewers. To dispose safely, pour unwanted paint onto old newspapers and let dry before placing in a proper waste receptacle.

### Disposal Information:

Disposal of any paint waste & containers in accordance with applicable Environment (Protection) Act 1986 under the Hazardous Wastes (Management & Handling) rules 1989.

### Environment:

Does not contain any added lead, mercury or chromium compounds.  
**Lead content does not exceed 90 parts per million.**

Note: For dark shades and Horizontal surface, one or two additional coats are recommended for better performance of paint film. Primed surface should be immediately painted with top coats.

