



NIPPON PAINT

SHOGUN STAR EXTERIOR EMULSION

NIPPON PAINT SHOGUN STAR

Nippon Paint Shogun Star is an exterior emulsion paint specially formulated using modified-acrylic emulsion which provides a high sheen. It is suitable for dry and moderately humid weather conditions. It is based on special encapsulated technology that ensures the protection of the exterior wall from algal & fungal attacks and keeps the wall fresh.

GREEN ASSURED



PRODUCT FEATURES



Water Resistant

Avoid blistering and peeling



Excellent Hiding

Gives a luxurious look and blemish free finish to the walls.



Sheen Finish

Rich look to exterior walls



3 Year Protection

*3 years Performance Warranty for Film Integrity, Flaking, Peeling & Colour Retention.





NIPPON PAINT

SHOGUN STAR EXTERIOR EMULSION

TECHNICAL DETAILS

Bases	:	White & Bases
Colour Range	:	Please refer to Nippon Paint shade card and fan decks
Finish	:	Sheen
Dry Time	:	To Touch: 30 minutes To Recoat: 4-6 Hours
Gloss level	:	60° Head: 4-7 units
Clean up solvent	:	Clean, potable water
Stability of diluted paint	:	24 Hours
Shelf life	:	3 Years from the date of manufacture in original tightly closed containers
Dilution	:	50 - 75% by volume with clean, potable water. For dark Shades 30% by volume with clean, potable water is recommended. Stir & Strain well before use.

Coverage:



SHOGUN STAR

50 - 60 sq ft/ltr for 2coats

(Actual coverage is dependant on the substrate condition, surface porosity, method of application)

HOW TO APPLY

Surface Preparation:

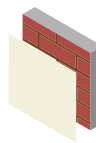
For Repainting: Clean the surface till it is free from dust, grease and any flaking paint from surface. Any unstable paint to be removed, using high pressure wash or scraper whichever is appropriate. Algae or Fungus on the wall to be removed, by using high pressure wash or coir brush and shall be treated with Walltron Kleanwall fungicidal solution.

New Plaster: Ensure that surface is completely cured and dry. Application of cement paint/white cement/lime as an undercoat is not recommended.

Application:

- Brush
- Roller
- Conventional Spray

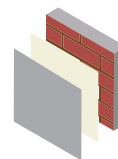
Process:



Primer
Nippon Paint
Multi-Purpose
Wall Sealer/
Latex Exterior Primer

Apply 1 coat

Allow it to dry
for 4-6 hours



Top Coat
Nippon Paint
Shogun Star
Exterior Emulsion

Apply 2-3 coats

Allow it to dry
for 4-6 hours

SAFETY AND ENVIRONMENT

During Painting:

Always work in a well ventilated area. Wear appropriate attire, especially gloves and eye protection gear. Avoid contact with skin as it may cause irritation.

Cleaning:

Clean all equipments with clean water immediately after use.

Safety Instructions:

In the case of eye contact, rinse immediately with water and seek immediate medical treatment. To remove paint from skin, use soap and water or appropriate cleanser. In the event of spillage, contain and collect spilt paint by using sand or earth.

Precautions:

Avoid painting when the temperature is below 10 degrees Celsius. Painting is not recommended if the moisture content and alkalinity of the walls is high. Moisture content of the walls should be below 16% (measured by Protimeter) and alkalinity of the wall should be below pH-9. Relative humidity should be below 85%. Painting on a newly plastered wall is recommended after 12 weeks of curing.

Storage:

Store paint in a cool, dry and well ventilated place away from heat sources, flammables or direct sunlight. Keep container tightly closed in a secure, upright position. Do not store near food, drink or animal feed. Keep out of reach of children. Do not dispose of unwanted paint into drains, water sources or open sewers. To dispose safely, pour unwanted paint onto old newspapers and let dry before placing in a proper waste receptacle.

Disposal Information:

Disposal of any paint waste & containers in accordance with applicable Environment (Protection) Act 1986 under the Hazardous Wastes (Management & Handling) rules 1989.

Environment:

Does not contain any added lead, mercury or chromium compounds.

Lead content does not exceed 90 parts per million.

Note: For dark shades and Horizontal surface, one or two additional coats are recommended for better performance of paint film. Primed surface should be immediately painted with top coats.
Post Application Instruction: To enhance the performance of the paint film, clean the exterior surface, algae & fungus if any with clean water in an interval of 6 month

