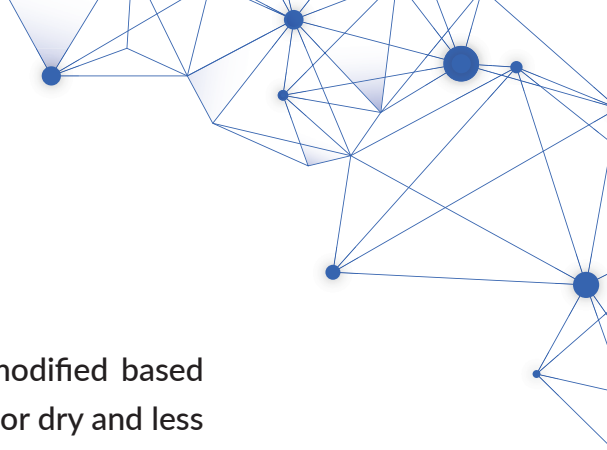




NIPPON PAINT

SHOGUN ULTRA

EXTERIOR EMULSION



NIPPON PAINT SHOGUN ULTRA

Nippon Paint Shogun Ultra is a specially formulated acrylic-modified based Exterior emulsion paint with silicon additives suitable for exterior dry and less humid weather conditions. Its superior ingredients ensure that the exterior wall is protected from algal & fungal attach and keeps the wall fresh.

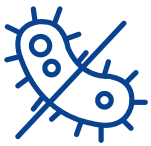
GREEN ASSURED



PRODUCT FEATURES



Water Resistant
Avoid blistering and peeling



Anti Algal
Your walls will look rich and spotless



Excellent Hiding
Gives a luxurious look and blemish free finish to the walls



Where To use: Can be used on Exterior walls.



NIPPON PAINT

SHOGUN ULTRA

EXTERIOR EMULSION

TECHNICAL DETAILS

| | | |
|----------------------------|---|--|
| Bases | : | White & Bases |
| Colour Range | : | Please refer to Nippon Paint shade card and fan decks |
| Finish | : | Smooth Matt finish |
| Dry Time | : | To Touch: 30 minutes To Recoat: 4-6 Hours |
| Gloss level | : | 60° head: 0 to 5 units. |
| Clean up solvent | : | Clean, potable water |
| Stability of diluted paint | : | 24 Hours |
| Shelf life | : | 3 Years from the date of manufacture in original tightly closed containers . |
| Dilution | : | 50 to 75% by volume with clean, potable water. For dark Shades 30% by volume with clean, potable water is recommended. Stir & Strain well before use. |

Coverage:



SHOGUN ULTRA

4.60-5.57 sq.mt./litre/2 coats

(Actual coverage is dependant on the substrate condition, surface porosity, method of application)

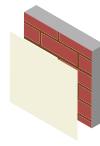
HOW TO APPLY

Surface Preparation:

For Repainting: Clean the surface till it is free from dust, grease and any flaking paint from surface. Any unstable paint to be removed, using high pressure wash or scraper whichever is appropriate. Algae or Fungus on the wall to be removed, by using high pressure wash or coir brush and shall be treated with Walltron Kleanwall fungicidal solution.

New Plaster: Ensure that surface is completely cured and dry. Application of cement paint/white cement/lime as an undercoat is not recommended.

Process:



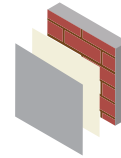
Primer
Nippon Paint Multi-Purpose Wall Sealer/ Exterior Primer/ Latex Exterior Primer



Apply 1 coats



Allow it to dry for 4-6 hours



Top Coat
Nippon Paint Shogun Ultra Exterior Emulsion

Apply 2-3 coats

Allow it to dry for 4-6 hours

Application:

Brush: Dilute both 1st and 2nd coats with 50 - 75% water

Roller: Dilute both 1st and 2nd coats with 50 - 75% water

Conventional Spray: Dilute both 1st and 2nd coats with 50 - 75% water

SAFETY AND ENVIRONMENT

During Painting:

Always work in a well ventilated area. Wear appropriate attire, especially gloves and eye protection gear. Avoid contact with skin as it may cause irritation.

Cleaning:

Clean all equipments with clean water immediately after use.

Safety Instructions:

In the case of eye contact, rinse immediately with water and seek immediate medical treatment. To remove paint from skin, use soap and water or appropriate cleanser. In the event of spillage, contain and collect spill paint by using sand or earth.

Precautions:

Avoid painting when the temperature is below 10 degrees Celsius. Painting is not recommended if the moisture content and alkalinity of the walls is high. Moisture content of the walls should be below 16% (measured by Protimeter) and alkalinity of the wall should be below pH-9. Relative humidity should be below 85%. Painting on a newly plastered wall is recommended after 12 weeks of curing.

Storage:

Store paint in a cool, dry and well ventilated place away from heat sources, flammables or direct sunlight. Keep container tightly closed in a secure, upright position. Do not store near food, drink or animal feed. Keep out of reach of children. Do not dispose of unwanted paint into drains, water sources or open sewers. To dispose safely, pour unwanted paint onto old newspapers and let dry before placing in a proper waste receptacle.

Disposal Information:

Disposal of any paint waste & containers in accordance with applicable Environment (Protection) Act 1986 under the Hazardous Wastes (Management & Handling) rules 1989.

Environment:

Does not contain any added lead, mercury or chromium compounds.

Lead content does not exceed 90 parts per million.

