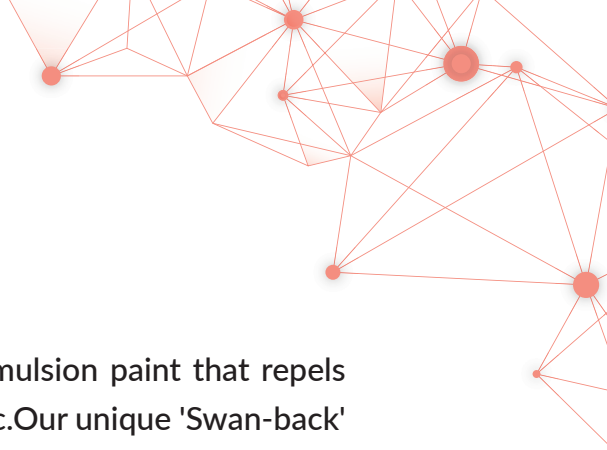




NIPPON PAINT

SPOTLESS NXT

STAIN REPELLENT EMULSION



NIPPON PAINT SPOTLESS NXT

Premium Interior Emulsion is a specially-formulated acrylic emulsion paint that repels household stains such as tea, coffee, juices, ink, hand-prints, etc. Our unique 'Swan-back' technology makes it highly resistant to the penetration of water-borne stains, and causes them to form beads. This 'beading effect' ensures stains don't stick and can be removed easily without damaging the paint. Nippon Spot-less NXT is a high-quality paint that is suitable for bedrooms, hallways, living and dining rooms.

GREEN ASSURED



PRODUCT FEATURES



Swan-back Technology

Stain free clean walls resulting in a healthy environment.



Stain-resistant

Stain free clean walls resulting in a healthy environment



Ultra Low VOC

Healthy interiors – ensures that home owners can occupy the house immediately after painting



Good Washability

Trouble free cleaning of the walls





NIPPON PAINT

SPOTLESS NXT

STAIN REPELLENT EMULSION

TECHNICAL DETAILS

Bases	:	White, Base 4, Base 3, Base 2, Base 1 and Yellow Base
Colour Range	:	Please refer to Nippon Paint shade card and fan decks
Finish	:	Soft Sheen
Dry Time	:	To Touch: 30 minutes To Recoat: 4-6 Hours
Gloss level	:	60° head: 5 - 18 units
Clean up solvent	:	Clean, potable water
Stability of diluted paint	:	24 Hours
Shelf life	:	3 Years from the date of manufacture in original tightly closed containers .
Dilution	:	30 - 40% by volume with clean, potable water, 20% dilution for dark shades

Coverage:



SPOTLESS NXT

200 - 250 sq ft/litre/coat
& 100 - 120 sq ft/litre/2 coats

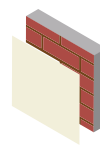
(Actual coverage is dependant on the substrate condition, Film Thickness, surface porosity, method of application)

HOW TO APPLY

Surface Preparation:

Keep surface clean and dry for a period of at least 3 weeks. Remove dust, dirt, grease and any flaking paint from the surface. and sand to smooth. Ensure there is no fungus or moisture on the walls. Repair surface defects with suitable filler.

Process:



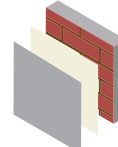
Primer
Nippon Paint Multi-Purpose Wall Sealer/ Interior Primer



Apply 1 coats



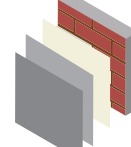
Allow it to dry for 4-5 hours



Putty
Nippon Paint Acrylic Wall Putty

Apply 1-2 coats

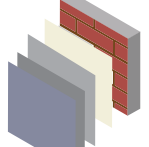
Allow it to dry for 12-18 hours



Primer
Nippon Paint Multi-Purpose Wall Sealer/ Interior Primer

Apply 1 coats

Allow it to dry for 4-5a hours



Top Coat
Nippon Paint Spotless NXT

Apply 2-3 coats

Allow it to dry for 4-6 hours

Application:

Brush:	Dilute both 1 st and 2 nd coats with 30-40% water
Roller:	Dilute both 1 st and 2 nd coats with 30-40% water
Conventional Spray:	Dilute both 1 st and 2 nd coats with 30-40% water

SAFETY AND ENVIRONMENT

During Painting:

Always work in a well ventilated area. Wear appropriate attire, especially gloves and eye protection gear. Avoid contact with skin as it may cause irritation.

Cleaning:

Clean all equipments with clean water immediately after use.

Safety Instructions:

In the case of eye contact, rinse immediately with water and seek immediate medical treatment. To remove paint from skin, use soap and water or appropriate cleanser. In the event of spillage, contain and collect spilt paint by using sand or earth.

Precautions:

Avoid painting when the temperature is below 10 degrees Celsius. Painting is not recommended if the moisture content and alkalinity of the walls is high. Moisture content of the walls should be below 16% (measured by Protimeter) and alkalinity of the wall should be below pH-9. Relative humidity should be below 85%. Painting on a newly plastered wall is recommended after 12 weeks of curing.

Storage:

Store paint in a cool, dry and well ventilated place away from heat sources, flammables or direct sunlight. Keep container tightly closed in a secure, upright position. Do not store near food, drink or animal feed. Keep out of reach of children. Do not dispose of unwanted paint into drains, water sources or open sewers. To dispose safely, pour unwanted paint onto old newspapers and let dry before placing in a proper waste receptacle.

Disposal Information:

Disposal of any paint waste & containers in accordance with applicable Environment (Protection) Act 1986 under the Hazardous Wastes (Management & Handling) rules 1989.

Environment:

Does not contain any added lead, mercury or chromium compounds. Lead content does not exceed 90 parts per million.

Note: For dark shades and horizontal surfaces 1 or 2 additional coats may be required for better performance of paint film.

