



**NIPPON
PAINT**

**WEATHERBOND
ADVANCE**

FOR SUPREME WEATHER PROTECTION

Nippon Paint Weatherbond Advance HB is an all-weather protection paint which possesses a unique lamination technology with silicone, providing twice the toughness and durability resulting in supreme protection against harsh weather. It has innovative "sunblock technology" that reflects 90% of the solar light on exterior walls and reduces surface temperature up to 5 C, making the interiors of the house cooler, thus helping to save energy. It provides excellent resistance to flaking, efflorescence and alkali. It has ultra-low VOC ensuring a safe environment.

GREEN ASSURED



PRODUCT FEATURES



Lamination Technology

Gives a polished look to your home for years to come.



Dirt Pick-up Resistant

The exteriors look new and beautiful for years.



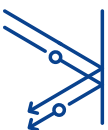
Ultra Low VOC

Environment-friendly and healthy paint.



10 Year Protection

*10 years Performance Warranty for Film Integrity, Flaking, Peeling & Colour Retention.



Sunblock Technology

This makes the interior cooler, thus helping to save energy used for Air conditioning.



Anti-fading Formula

Colours look uniform giving a beautiful look to the walls for years.





NIPPON PAINT

WEATHERBOND ADVANCE

FOR SUPREME WEATHER PROTECTION

TECHNICAL DETAILS

Bases	:	White & Bases
Colour Range	:	Please refer to Nippon Paint shade card and fan decks
Finish	:	Sheen finish
Dry Time	:	To Touch: 30 minutes To Recoat: 4-6 hours
Gloss level	:	60° head: 10 to 20 units
Clean up solvent	:	Clean, potable water
Stability of diluted paint	:	24 Hours
Shelf life	:	3 Years from the date of manufacture in original tightly closed containers
Dilution	:	40-50% by volume with clean, potable water

Coverage:



WEATHERBOND ADVANCE

10.22-12.08 sq.mt./litre/coat &
5.11-6.04 sq.mt./litre/2 coats

(Actual coverage is dependant on the substrate condition, surface porosity, method of application)

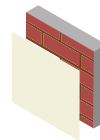
HOW TO APPLY

Surface Preparation:

For Repainting: Clean the surface till it is free from dust, grease and flaking paint. Any unstable paint to be removed, using high-pressure wash or scraper, whichever is appropriate. Algae and fungus on the wall to be removed, by using high-pressure wash or coir brush and shall be treated with Walltron Kleanwall Fungicidal solution

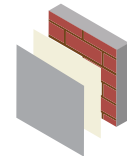
New plaster/Fresh Concrete: Ensure surface is completely cured and dry. Application of cement paint/lime/Cement putty as undercoat is not recommended. Fill the cracks upto 3mm if any with Walltron N-seal crack fill powder.

Process:



Primer

Nippon Paint
Dr. Bond Efflorescence Resistant Sealer/
Nippon Paint Multi-Purpose Wall Sealer/
Exterior Primer



Top Coat

Nippon Paint
Weatherbond Advance HB

Application:

Brush:	Dilute both 1 st and 2 nd coats with 40-50% water
Roller:	Dilute both 1 st and 2 nd coats with 40-50% water
Conventional Spray:	Dilute both 1 st and 2 nd coats with 30% water



Apply 1 coats



Allow it to dry
for 4-6 hours

Apply 2-3 coats

Allow it to dry
for 4-6 hours

SAFETY AND ENVIRONMENT

During Painting:

Always work in a well ventilated area. Wear appropriate attire, especially gloves and eye protection gear. Avoid contact with skin as it may cause irritation.

Cleaning:

Clean all equipments with clean water immediately after use.

Safety Instructions:

In the case of eye contact, rinse immediately with water and seek immediate medical treatment. To remove paint from skin, use soap and water or appropriate cleanser. In the event of spillage, contain and collect spilt paint by using sand or earth.

Precautions:

Avoid painting when the temperature is below 10°C. Painting is not recommended if the moisture content and alkalinity of the walls is high. Moisture content of the walls should be below 16% (measured by Protimeter) and alkalinity of the wall should be below pH-9. Relative humidity should be below 85%. Painting on a newly plastered wall is recommended after 12 weeks of curing.

Note: For dark shades and Horizontal surface, one or two additional coats are recommended for better performance of paint film.

Primed surface should be immediately painted with top coats. For best Performance use Nippon Dr. Bond Efflorescence Resistance Sealer as primer.

Post Application Instruction: To enhance performance of the paint film, clean the exterior surfaces, algae or fungus if any with clean water in an interval of 6 months.

Storage:

Store paint in a cool, dry and well ventilated place away from heat sources, flammables or direct sunlight. Keep container tightly closed in a secure, upright position. Do not store near food, drink or animal feed. Keep out of reach of children. Do not dispose of unwanted paint into drains, water sources or open sewers. To dispose safely, pour unwanted paint onto old newspapers and let dry before placing in a proper waste receptacle.

Disposal Information:

Disposal of any paint waste & containers in accordance with applicable Environment (Protection) Act 1986 under the Hazardous Wastes (Management & Handling) rules 1989.

Environment:

Does not contain any added lead, mercury or chromium compounds.

Lead content does not exceed 90 parts per million.

